

de Montageanleitung
*) über Kundendienst erhältlich

da Monteringsvejledning
*) Kan købes hos serviceafdelingen

sv Monteringsanvisning
*) kan fås via Service

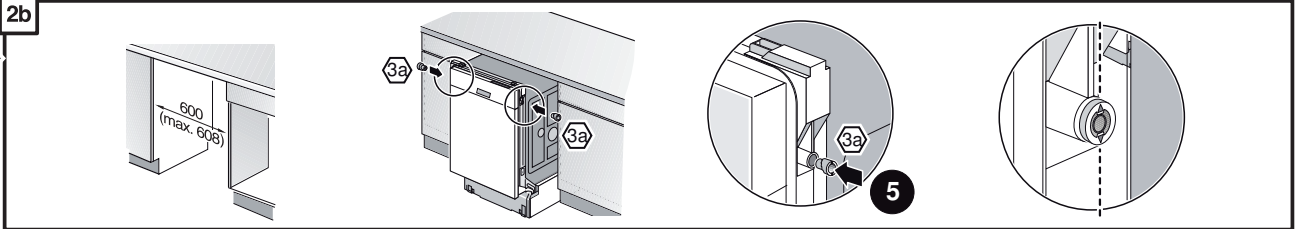
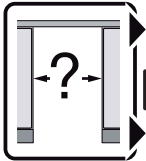
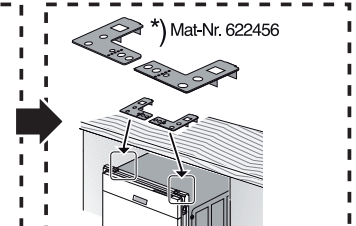
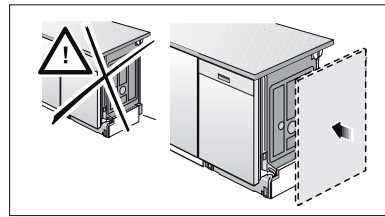
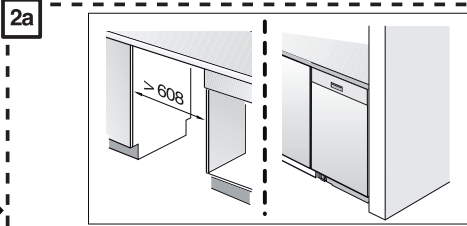
no Monteringsanvisning
*) fåes hos kundeservice

fi Asennusohje
*) Saatavissa huoltopalvelusta



1

- 1 —
- 2 — 1,75 m
- 3a —
- 3b — Ø4x36
- 4 —
- 5 — Ø4x13
- 6 —
- 7 —
- 8 —
- 9 —



3

nicht einklemmen
klem ikke ind
inte klämma fas
ikke klem fast
ei saa jäädä puristuksiin

4

verspannen
spænd
spänna
spenn fast
tasapainota

